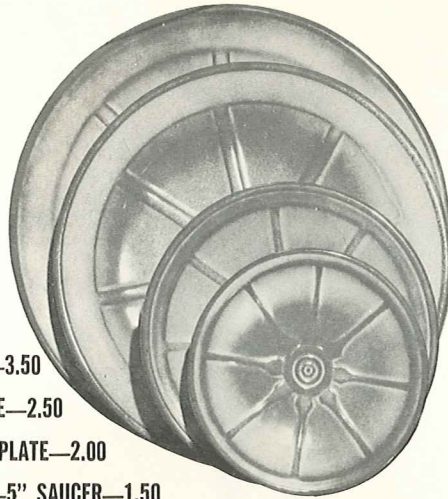




167—3½" MINIATURE HORSESHOE—1.50



94FL—10" PLATE—3.50

94F—9" PLATE—2.50

94G—7" PLATE—2.00

94E—5" SAUCER—1.50



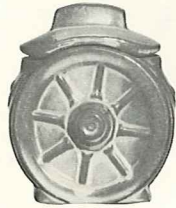
94H—SALT & PEPPER—3.00



94XL—20 OZ. BOWL—2.50



94M—16 OZ. MUG—3.00



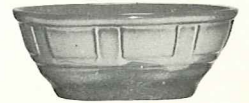
94B—SUGAR WITH LID—3.00



94A—8 OZ. CREAMER—2.00
94AB—CREAM & SUGAR SET—5.00



94C—5 OZ. CUP—2.00



94X—14 OZ. CEREAL—2.00



94V—2 QT. BAKER/BEAN POT—6.00
94V/W—BAKER W/WARMER SET—11.00



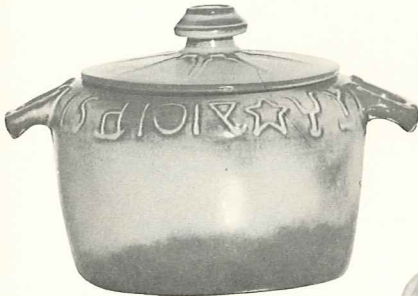
94L—12 OZ. TUMBLER—2.00



94XO—6 OZ. DESSERT—1.50



94QD—13" DIVIDED BOWL—6.00



94W—3 QT BAKER/BEAN POT—7.50
94W/W—BAKER/W WARMER SET—12.50



94Q—13" PLATTER—6.00



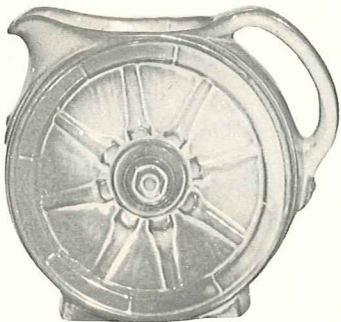
94N—1 QT. VEGETABLE BOWL—3.00



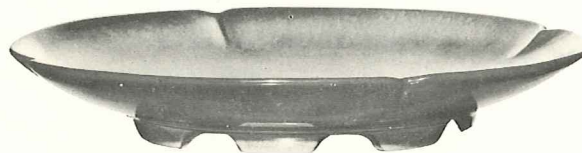
94P—17" PLATTER—12.50



94J—2 CUP TEAPOT—4.00



94D—2 QT. PITCHER—6.00



5FC—15" CHOP PLATE—15.00